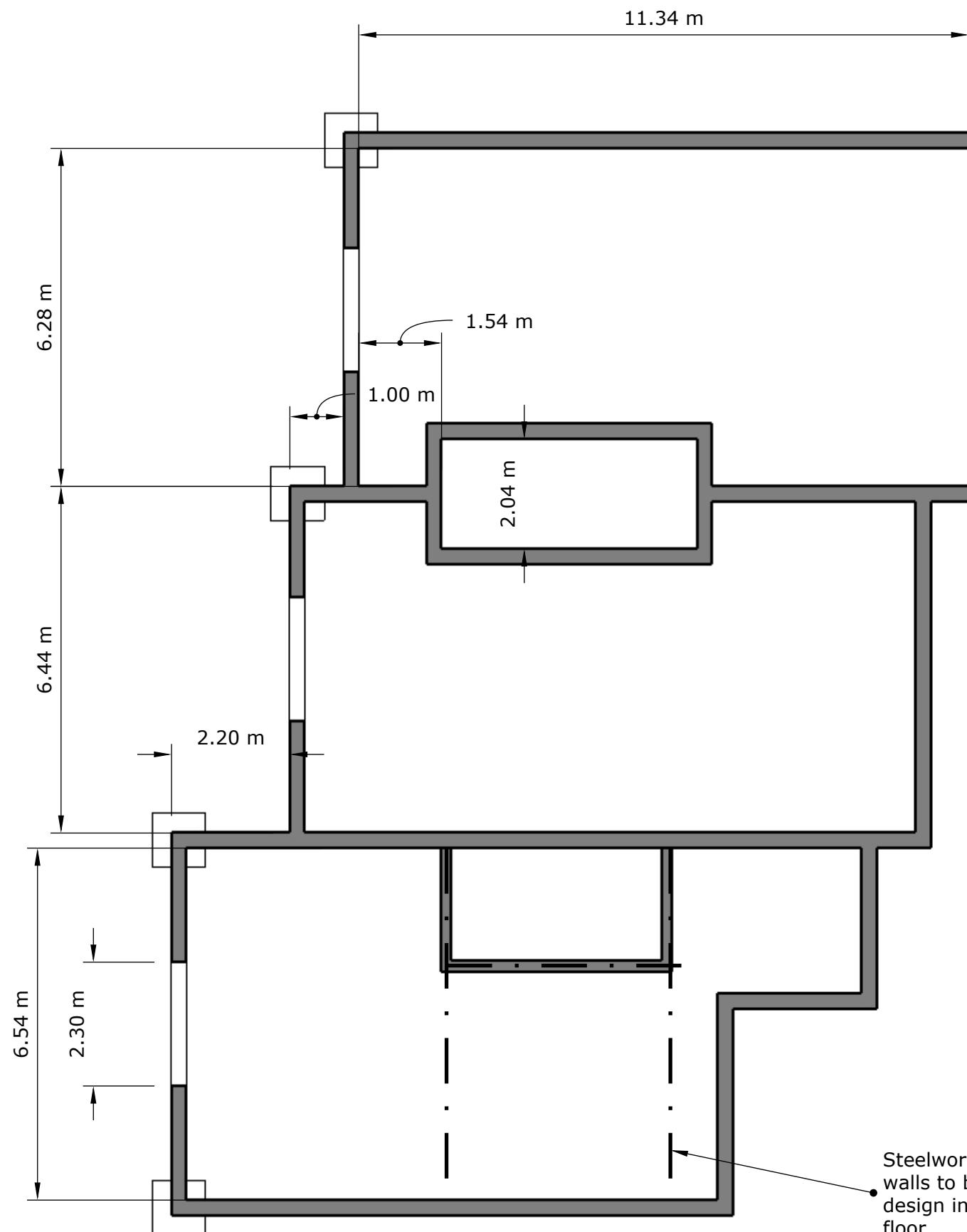


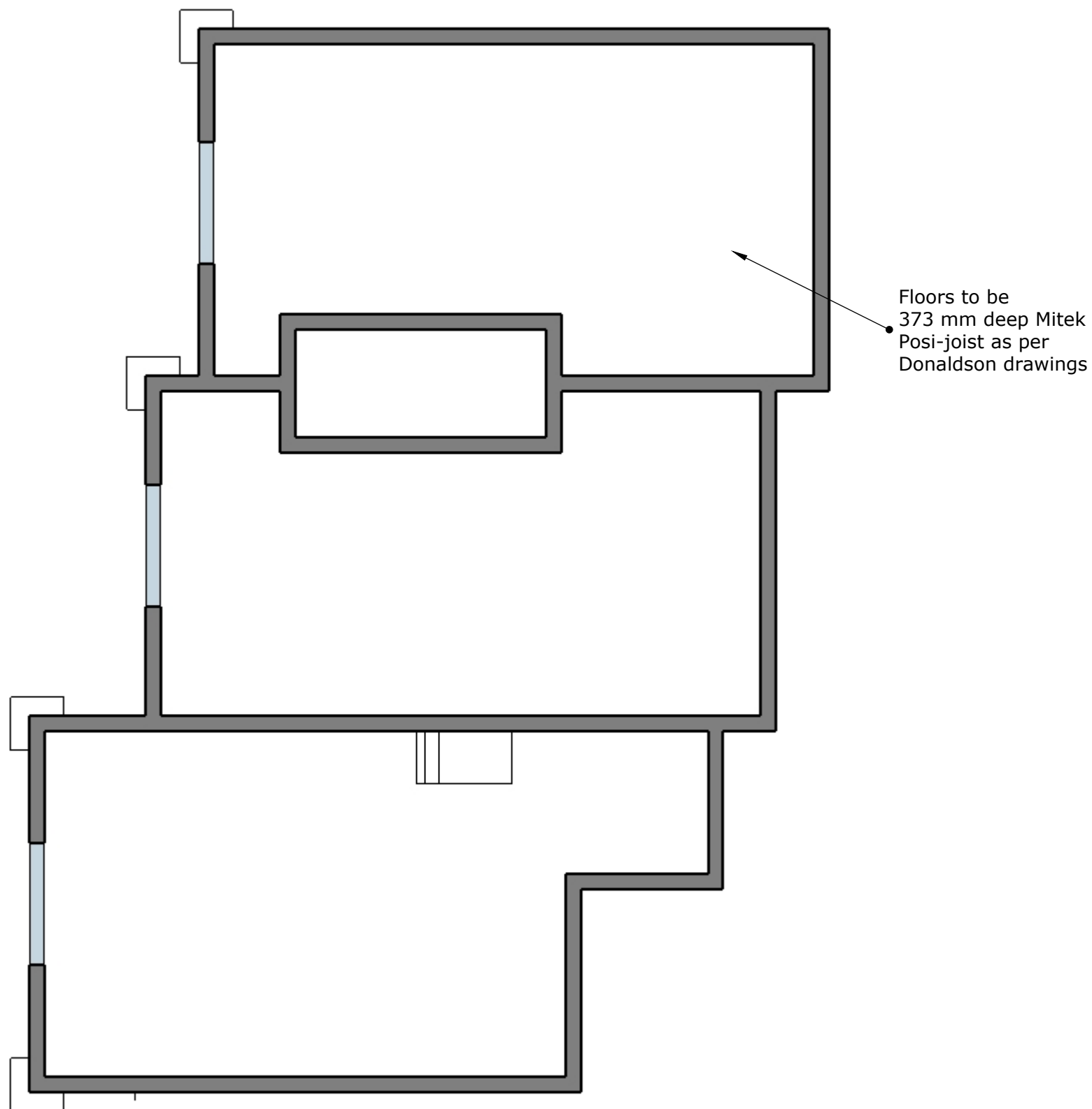
**Plan on R C Beam**



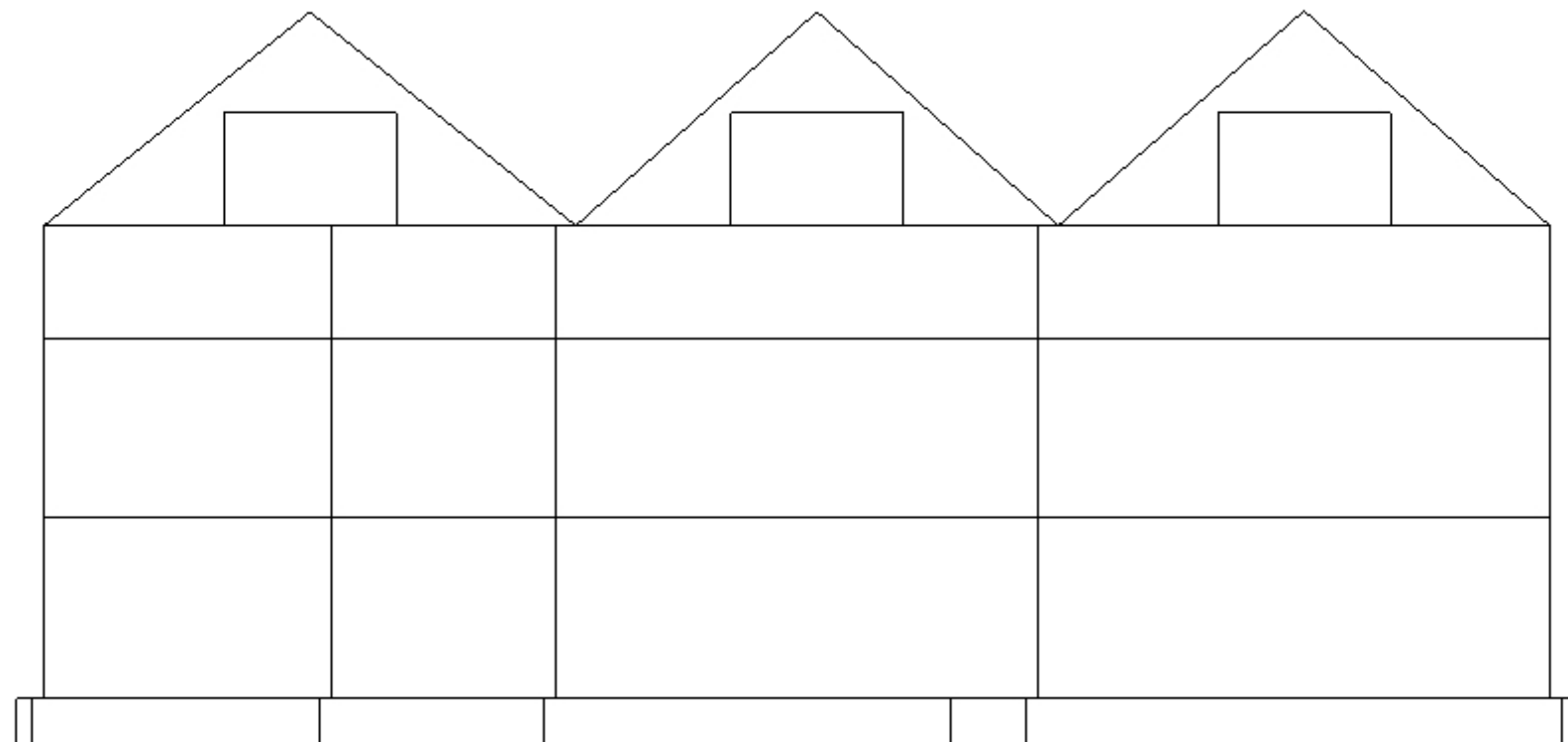
**First Floor Plan**

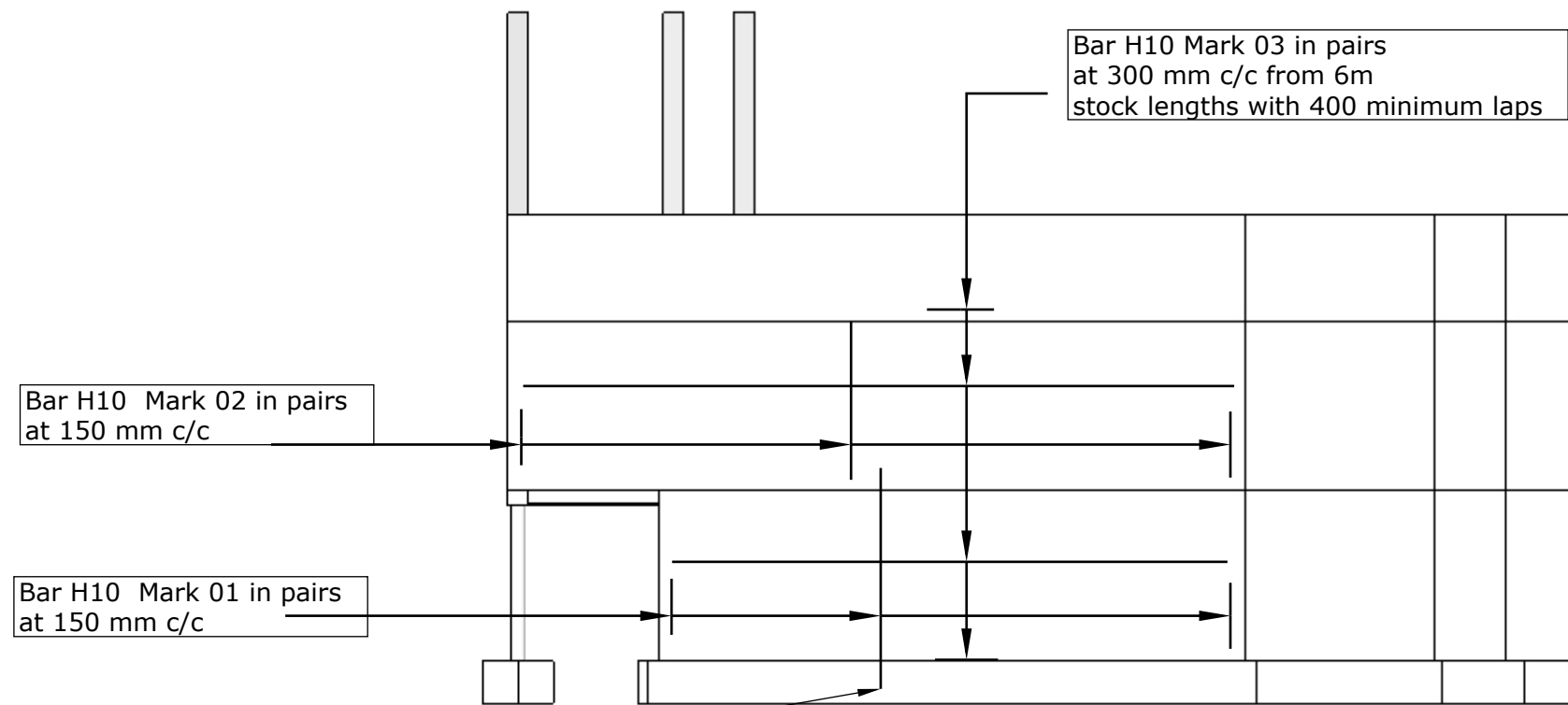
Floors to be  
373 mm deep Mitek  
Posi-joist as per  
Donaldson drawings

Steelwork supporting masonry  
walls to be as per Engineers  
design in depth of Posi-joist  
floor



**Second Floor Plan**

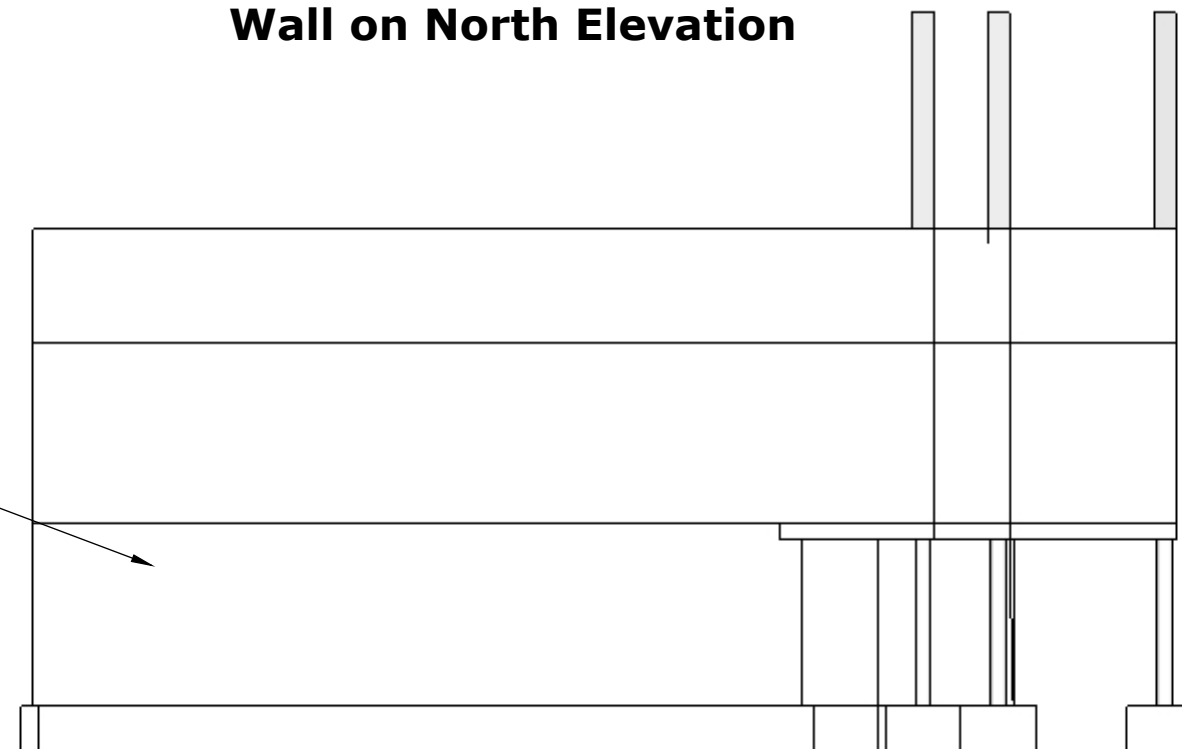




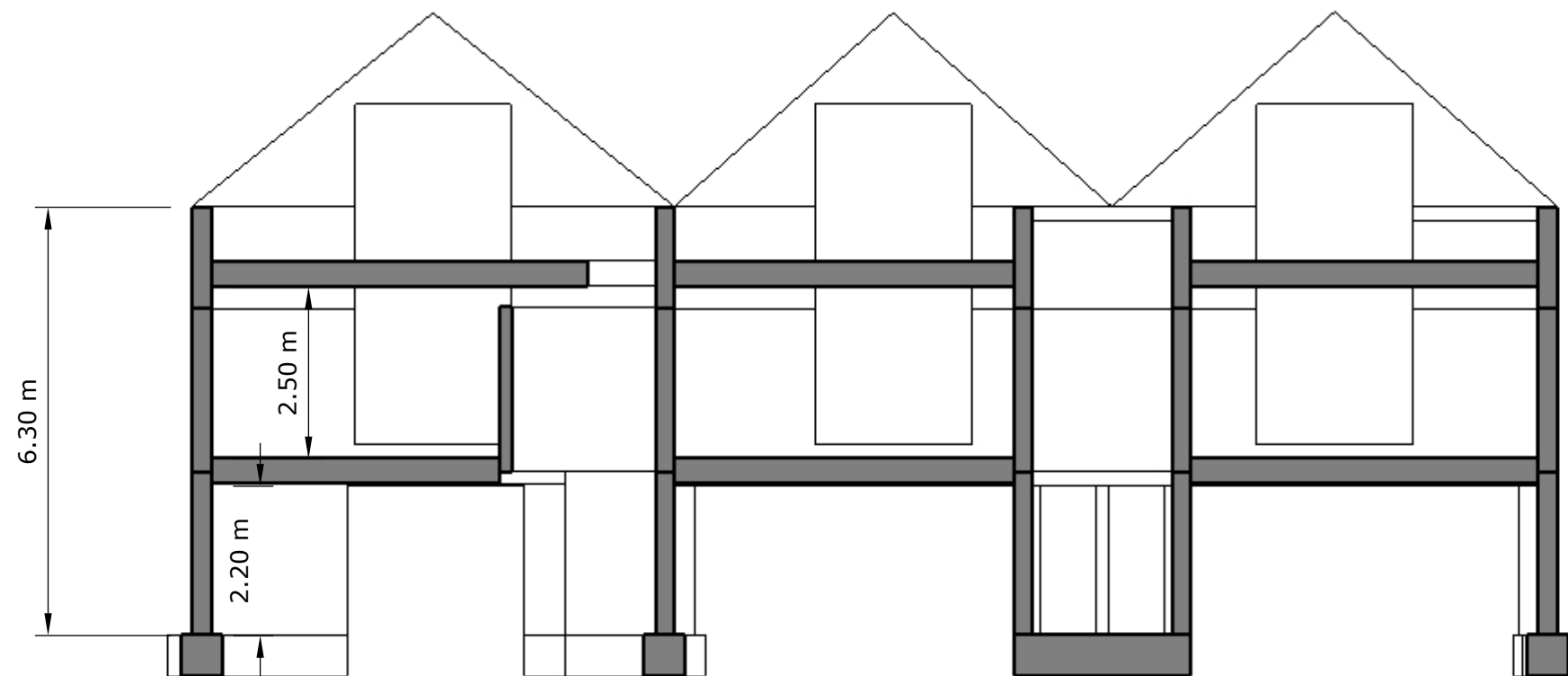
100 mm deep 12mm diameter holes  
to be drilled in footing and bar Mk 01  
placed in the holes after 1 course of  
ICF has been placed in position. Holes  
to be drilled in pairs at 90 mm c/c  
to provide 25mm cover to bars.

### Wall on North Elevation

Wall reinforcement on  
South Elevation to be  
as on North Elevation



### Wall on South Elevation



**Cross Section**

